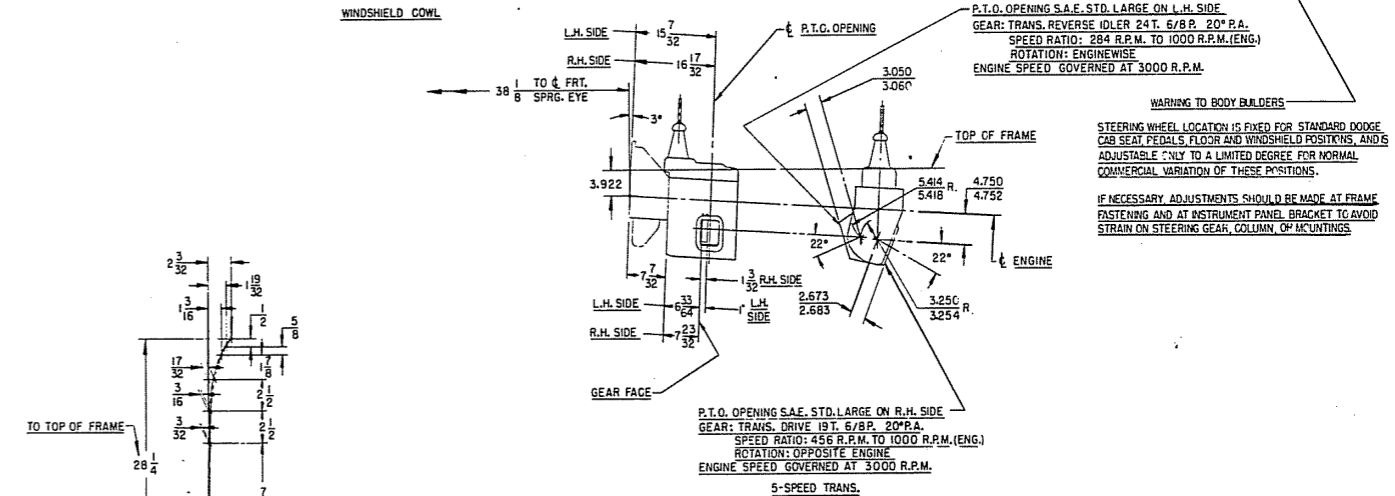
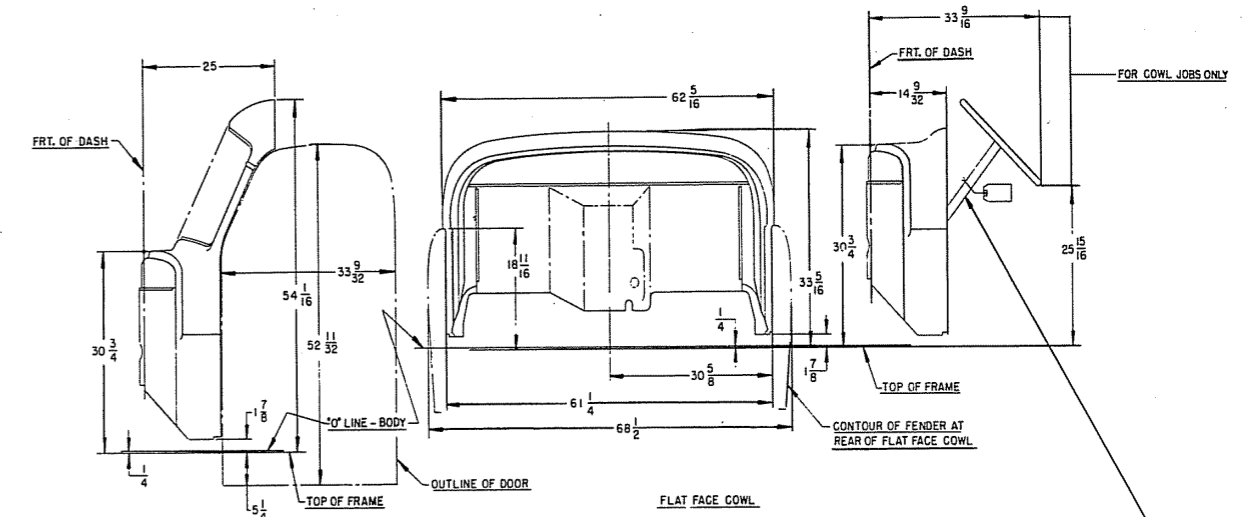


FRONT SPRINGS

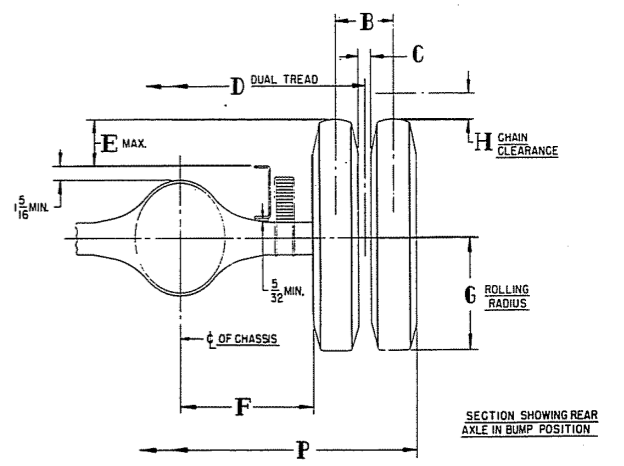
| M | LOAD LBS. PER SPRG. | RATE LBS. PER INCH | SPRG. # |
|---------|---------------------|--------------------|---------|
| 12 5/16 | 2200 | 579 | 126068 |
| 13 3/16 | 2600 | 796 | 126161 |

REAR SPRINGS

| L | LOAD LBS. PER SPRG. | RATE LBS. PER INCH | SPRG. # |
|---------|---------------------|--------------------|---------|
| 14 5/16 | 7000 | 2825 | 576735 |
| 14 1/16 | UP TO 3990 | 1450 | |
| 14 7/16 | 8500 | 3420 | 924313 |
| 14 1/16 | UP TO 4910 | 1785 | |



WARNING TO BODY BUILDERS
 STEERING WHEEL LOCATION IS FIXED FOR STANDARD DODGE CAB SEAT, PEDALS, FLOOR AND WINDSHIELD POSITIONS, AND IS ADJUSTABLE ONLY TO A LIMITED DEGREE FOR NORMAL COMMERCIAL VARIATION OF THESE POSITIONS.
 IF NECESSARY ADJUSTMENTS SHOULD BE MADE AT FRAME FASTENING AND AT INSTRUMENT PANEL BRACKET TO AVOID STRAIN ON STEERING GEAR, COLUMN OF MOUNTINGS.



| TIRE SIZE | RIM SIZE | A | B | C | D | E | F | G | H | P |
|--------------|----------|----------|------|-------|-------|-------|-------|-------|-------|---|
| 7.50/20 10P | 20X6 | 70 7/8 | | | | | | | | |
| 8.25/20 10P | 20X6 | 70 7/8 | | | | | | | | |
| 8.25/20 12P | 20X6 | 70 7/8 | | | | | | | | |
| 9.00/20 10P | 20X7 | 69 3/4 | | | | | | | | |
| 9.00/20 12P | 20X7 | 69 3/4 | | | | | | | | |
| 10.00/20 12P | 20X7 | 69 3/4 | | | | | | | | |
| 10.00/20 12P | 20X8 | 68 11/16 | | | | | | | | |
| 11.00/20 12P | 20X8 | 68 11/16 | | | | | | | | |
| 8.25/20 10P | 20X6 | 10 7/8 | 1.94 | 7 1/2 | 7.86 | 25.84 | 18.07 | 4 | 91.30 | |
| 8.25/20 12P | 20X6 | 10 7/8 | 1.94 | 7 1/2 | 7.86 | 25.84 | 18.14 | 4 | 91.30 | |
| 9.00/20 10P | 20X7 | 11 15/16 | 1.68 | 7 1/2 | 8.81 | 24.65 | 18.89 | 4 | 93.68 | |
| 9.00/20 12P | 20X7 | 11 15/16 | 1.68 | 7 1/2 | 8.81 | 24.65 | 18.89 | 4 | 93.68 | |
| 10.00/20 12P | 20X7 | 11 15/16 | 1.31 | 7 1/2 | 9.61 | 24.47 | 19.68 | 4 1/2 | 94.05 | |
| 11.00/20 12P | 20X8 | 13 | 1.69 | 7 1/2 | 10.26 | 23.59 | 21.00 | 4 1/2 | 95.81 | |

NOTE: ABOVE CHART FOR PROD. 21000* G.V.W. JOBS.
 FOR EX. EQ. 23000* G.V.W. JOBS—
 ADD 1 3/8 TO "D" & "P", & ADD 1/16 TO "F"
 SUBTRACT 1/4 FROM DIM. "A" FOR 20 X 7 RIM
 SUBTRACT 1/8 FROM DIM. "A" FOR 20 X 8 RIM

BODY BUILDERS LAYOUT
T, TA, V, VA—130", 142" W.B.
(TRACTOR)